

# MOSSCREEK

RUSTIC AMERICAN HOME DESIGN

# CIDER MILL



Copyright 2012 MossCreek  
www.MossCreek.net  
800.737.2166

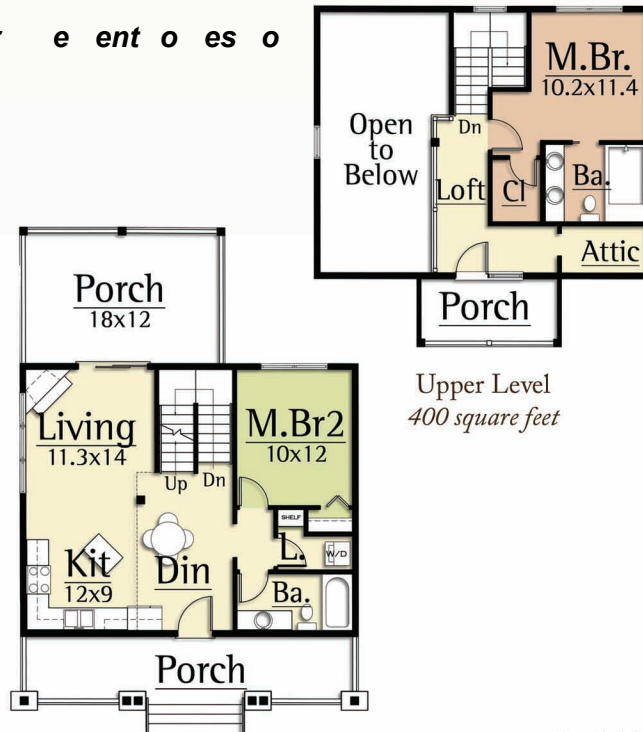
**We Bring Design to Life!**

The Cider Mill is a part of America's rich heritage of living off the land. Cider Mills were powered hand, water power, or horse-power, and were used to grind apples in the first step of making apple cider. Today, apple cider has an enthusiastic following in the form of cider festivals and new recipes.

The **Cider Mill** by MossCreek draws its life from the land as well. With its narrow footprint, the Cider Mill is amenable to almost any site condition. Constructed of natural materials of wood, stone, and glass, the Cider Mill is the perfect small rustic home.

**CIDER MILL**  
*1,112 total square feet*

t r e e n t o e s o



Main Level  
712 square feet

Upper Level  
400 square feet

Available with  
optional Lower  
Level.  
See 1,824 sf Version

Copyright 2012 MossCreek

www.MossCreek.net • 800.737.2166