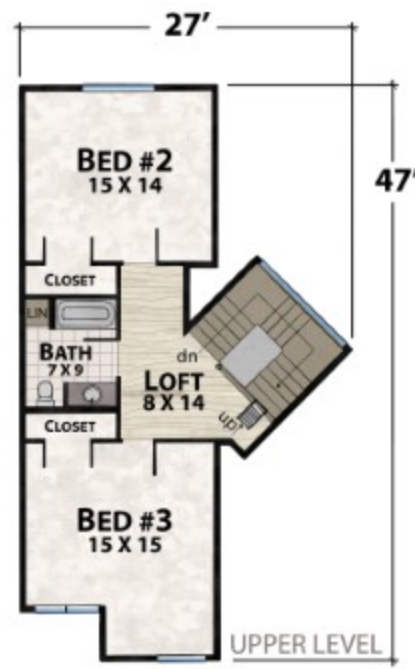


The Hill Top Tower

natural element homes

The Drawing Board Collection

1-800-970-2224



Plan Info:

Bedrooms	3
Baths	2
Half Baths	1

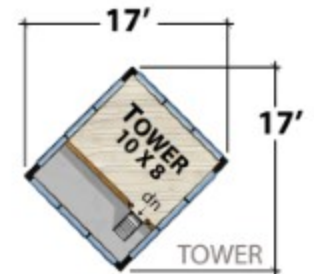
Square Footage:

Heated:	
1720	First Floor
693	Upper Floor
80	Tower

Total: 2493

Unheated:

573	Porches/Decks
0	Garage



FRONT



RIGHT



REAR



LEFT

Plan customization is included with your home plan purchase. Why not make it PERFECT?

natural element homes

Copyrighted Home Plan: this home plan and images are protected by United States and international copyright Law and may not be duplicated, reproduced, modified, and/or distributed, in whole or in part, without the express written consent of Natural Element Homes.

www.NaturalElementHomes.com